

# Artevia

THE ART OF CONCRETE

## BEST PRACTICES FOR DECORATIVE CONCRETE FLATWORK

### Ordering Decorative Concrete

Use the same Artevia™ mix design and maintain a consistent slump throughout the application.

To maintain colour consistency, order decorative concrete in minimum 3m<sup>3</sup>.

Calcium chloride accelerators will discolour the concrete surface. Weathermix™ will not.

### Placing Decorative

Place concrete on a well-drained sub-grade that has adequate and uniform load-bearing characteristics and is thoroughly compacted.

Adding water on-site to achieve a higher slump will lighten colour.

Place Artevia™ close to its final position to avoid potential segregation.

Do not place Artevia™ over freestanding water, mud, frozen subgrade or soft spots. Artevia™ placed in the shade may display variations in colour. This is normal and will subside in time.

### Finishing Decorative Flatwork

Protect the concrete surface from rapid evaporation of bleed water. Use appropriate evaporation reducer.

Texture all surfaces adequately and uniformly for slip resistance.

Finish all surfaces consistently and at similar times after placement.

Finish the edges first and do all handwork in the same direction.

Do not moisten tools, sprinkle water or add water to the surface during finishing operations. This will lighten the surface.

Over-troweling or burnishing the concrete surface will cause discolouration and darkening of the surface colour.

### Curing Decorative Concrete

For best results, all decorative concrete should be cured. An appropriate curing method is necessary.

Until it is completely cured, the colour of concrete is normally less uniform and appears darker than the final colour. Do not allow items to stand on the concrete during and immediately following the curing process.

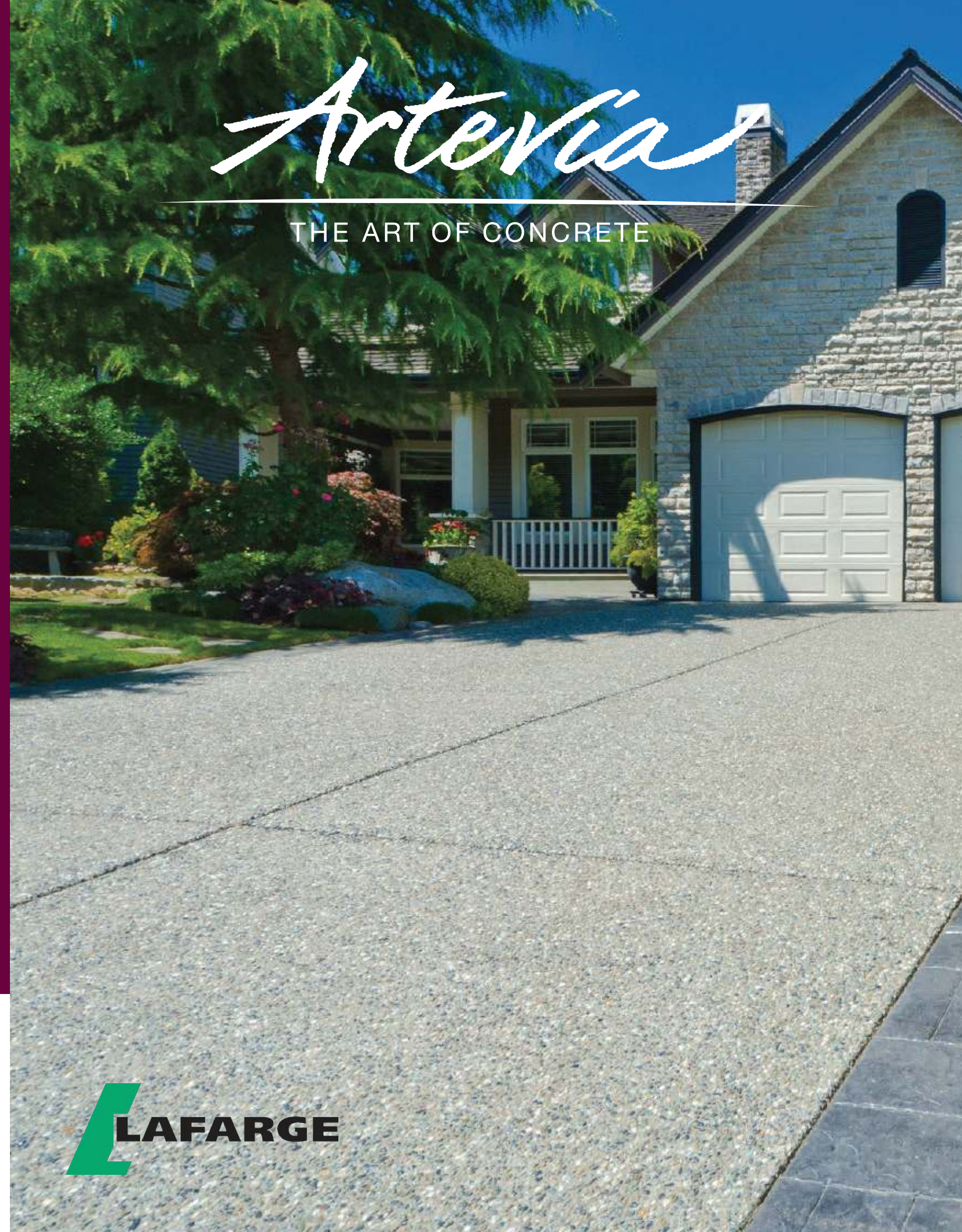
An appropriate method of curing is required for a minimum of 7 days.

Saw cut joint spacing 4 to 12 hours after placement.

Control joints should be a minimum of 1/4 of the slab thickness, no more than 3 meters apart in each direction and should be cut in a square pattern.

# Artevia

THE ART OF CONCRETE



6509 Airport Road, Mississauga, ON L4V 1S7  
[www.lafarge.ca](http://www.lafarge.ca)



## PRODUCTS

### Artevia™ Exposed



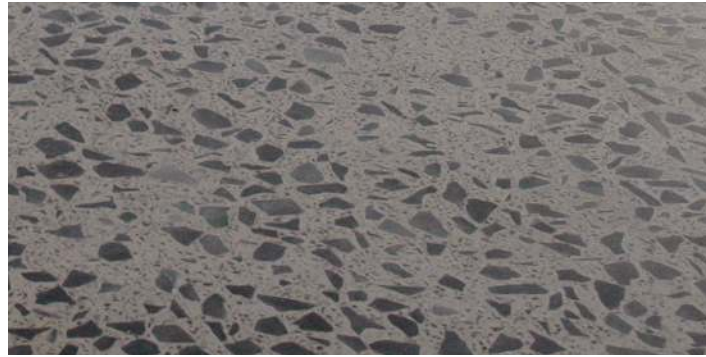
Artevia™ Exposed is a trustworthy and robust exterior concrete that offers excellent slip resistance. The exposed stone brings the concrete to life with a classy and modern look.

### Artevia™ Sand



Artevia™ Sand combines the sleek look of sand with the durability of concrete. This clean and stylish concrete is slip resistant and easy on the feet.

### Artevia™ Polish



Artevia™ Polish has a smooth texture like polished marble that is silky to the touch and elegant at first sight. Designed for use indoor and outdoor, it offers luxurious comfort that your bare feet will love. The look of natural stone at a fraction of the cost.

### Artevia™ Print



Artevia™ Print is an incredibly life like range of textured pavements, stone and natural effect finishes. They are durable and low maintenance, and with proper care, stay as beautiful as the day they were set, year after year.

## BENEFITS

Artevia™ decorative concrete has several advantages that are above and beyond conventional products (e.g. asphalt, paving stones, pressure treated wood, etc.):

- Reduced maintenance costs
- Increased durability
- Reduced wear and tear (severe weather, insect damage, etc.)
- Easy to maintain
- Excellent colour conformity
- Fade resistant, long lasting vibrancy
- Enhanced finishing characteristics
- Wide range of finishes can be achieved.

Colours shown approximate the colour of trowel finished concrete flatwork made with medium-gray cement. Concrete colour is altered by many factors including cement colour, slump, finishing practices, and curing methods. When considering materials and construction techniques, representative samples should be cast for approval. This process is especially important when colour matching, when particular finishes are specified, or when placing vertical concrete.

Lafarge Artevia™ decorative concrete may contribute to earning valuable LEED® credit points under the Sustainable Sites category: 7.1 Heat Island Effect, Non-Roof for New Construction, Existing Building, Schools and Core and Shell by calculating the Solar Reflectance Index (SRI) of the integral colour.

Confirm the SRI values with your sales representative if minimum SRI values are a project requirement

# Artevia

THE ART OF CONCRETE



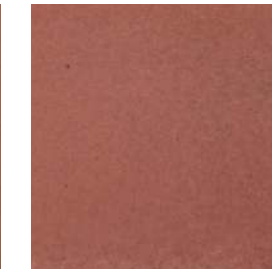
ARTEVIA SADDLE BROWN (SRI 18)



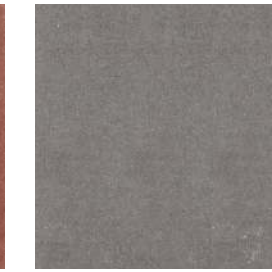
ARTEVIA PEBBLE GRAY (SRI 29)



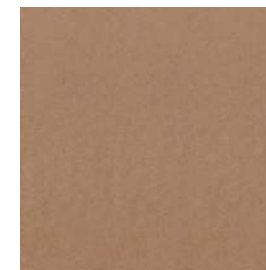
ARTEVIA BRAZILIAN TILE (SRI 29)



ARTEVIA CRIMSON RED (SRI 35)



ARTEVIA STANDARD SLATE (SRI 27)



ARTEVIA CHAMPAGNE BEIGE (SRI 43)



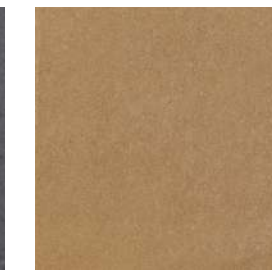
ARTEVIA PEARL BEIGE (SRI 31)



ARTEVIA ANTIQUE LACE (SRI 44)



ARTEVIA PREMIUM SLATE (SRI 24)



ARTEVIA MOCCASSIN MAIZE (SRI 44)



ARTEVIA MINERAL POWDER (SRI 45)



ARTEVIA ACORN BROWN (SRI 26)



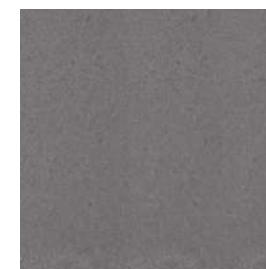
ARTEVIA DESERT SAND (SRI 51)



ARTEVIA ALMOND BROWN (SRI 25)



ARTEVIA WOODLAND BROWN (SRI 24)



ARTEVIA WARM SHADE GRAY (SRI 24)



ARTEVIA TEMPLE BEIGE (SRI 47)



ARTEVIA STEEL GRAY (SRI 12)



ARTEVIA STANDARD LEDGESTONE (SRI 25)



ARTEVIA STANDARD BROWNSTONE (SRI 37)

Colour samples are for reference only. Finished product appearance may vary. Always have a sample produced with the actual materials that will be used for the project